

NAVILA: LEGGED ROBOT VISION-LANGUAGE-ACTION MODEL FOR NAVIGATION

An-Chieh Cheng^{1,*}, Yandong Ji^{1,*}, Zhaojing Yang^{2,*}, Xueyan Zou¹,
Jan Kautz³, Erdem Bıyık², Hongxu Yin^{3,†}, Sifei Liu^{3,†}, Xiaolong Wang^{1,3,†}

¹UC San Diego ²USC ³NVIDIA



Figure 1: Real-world demonstration of NaVILA: Upon receiving human instructions, NaVILA uses a vision-language model to process RGB video frames and employs locomotion skills to execute the task on a robot. The robot successfully handles long-horizon navigation tasks and operates safely in challenging environments.

ABSTRACT

This paper proposes to solve the problem of Vision-and-Language Navigation with legged robots, which not only provides a flexible way for humans to command but also allows the robot to navigate through more challenging and cluttered scenes. However, it is non-trivial to translate human language instructions all the way to low-level leg joint actions. We propose NaVILA, a 2-level framework that unifies a Vision-Language-Action model (VLA) with locomotion skills. Instead of directly predicting low-level actions from VLA, NaVILA first generates mid-level actions with spatial information in the form of language, (e.g., “moving forward 75cm”), which serves as an input for a visual locomotion RL policy for execution. NaVILA substantially improves previous approaches on existing benchmarks. The same advantages are demonstrated in our newly developed benchmarks with IsaacLab, featuring more realistic scenes, low-level controls, and real-world robot experiments. <https://navila-bot.github.io/>

* Equal contribution, ordered alphabetically. † Equal advising.

1 INTRODUCTION

The ability to perform Vision-and-Language Navigation (VLN) has become a foundational component in modern robotics systems. With VLN, a robot is expected to navigate around unseen environments without a provided map following a language instruction (Anderson et al., 2018; Wang et al., 2019; Chaplot et al., 2020a;b;c; Ramrakhya et al., 2022). This not only offers a better interface for humans, but also strengthens cross-scene generalization through languages. In this paper, we further extend the study of VLN with legged robots (e.g., quadruped or humanoid). Using legs instead of wheels allows robots to navigate in more challenging and cluttered scenarios. As the examples shown in Figure 1, our robot can navigate through a messy laboratory space with narrow walkways, transition from room to room in a house, as well as tackle outdoor challenging environments such as uneven terrains with small rocks, holes, and troughs.

To translate language to action, the robot needs to reason about the input language, and perform closed-loop planning as well as low-level control. With the recent advancement in Large Language Models (LLMs) and Vision-Language Models (VLMs), several end-to-end Vision-Language-Action (VLA) systems have been developed (Brohan et al., 2023; Kim et al., 2024; Padalkar et al., 2024). These systems fine-tune a general-purpose VLM with large-scale robot manipulation demonstrations to produce low-level actions for control. While unifying reasoning and execution in a single model is fascinating and shows encouraging results, it is worthy to dive deeper into the question: Is there a better way to represent actions beyond the quantized low-level commands? After all, LLMs and VLMs were primarily trained with natural language. Unifying reasoning and execution becomes challenging when we need to convert that reasoning into precise, non-verbal actions.

Inspired by the recent progress on VLM (Chen et al., 2024b; Cheng et al., 2024) for spatial location and distance reasoning, we propose **NaVILA**, a two-level framework for legged robot VLN: A VLM is fine-tuned to output a **mid-level action** (VLA) in the form of language such as “turn right 30 degrees”, and a low-level visual locomotion policy is trained to follow this instruction for execution. The mid-level action output of the VLA conveys the location and direction information without the low-level commands. The advantages of this framework are three-fold: (i) By decoupling low-level execution from VLAs, the same VLA can be applied across different robots by swapping the low-level policy; (ii) Representing actions as mid-level language instructions enables training with diverse data sources, including real human videos and reasoning QA tasks. This enhances reasoning capabilities without overfitting outputs to specific low-level commands, and can leverage real-world data for generalization; (iii) NaVILA operates on two distinct timescales: the VLA, typically a large and computationally intensive model, runs at a lower frequency, providing high-level navigation commands; while the locomotion policy operates in real-time. This dual-frequency approach allows the locomotion policy to handle sophisticated obstacle avoidance and increases overall robustness.

To train the VLA, we demonstrate how to (i) Integrate historical context and current observations in VLN within existing VLM frameworks, (ii) Create a specialized navigation prompt tailored for VLN tasks, (iii) Introduce a carefully curated dataset blend designed to enhance VLN generalizability. These strategies allow us to fine-tune a general-purpose image-based VLM into a navigation-focused agent while simultaneously training it on general vision-language datasets, thereby maintaining its broad generalization capabilities. During training the locomotion skills, we employ a single-stage approach to learn vision-based locomotion policy. We construct a height map from raw LiDAR point clouds and introduce randomization to bridge the sim-to-real gap. This controller takes the output from our VLA model, converts it into command velocities, and tracks these velocities by controlling the positions of the joints. To our knowledge, this is the first end-to-end approach for training visual locomotion skills that are both robust and safe, enabling deployment in real-world, challenging environments (e.g., strong sunlight or near certain transparent surfaces).

In our experiments, we show that our VLA significantly outperforms the state-of-the-arts on classic VLN benchmarks, with over 17% improvement in success rate. To better simulate the challenges of locomotion navigation in VLN, we introduce a new benchmark, VLN-CE-Isaac, using Isaac Sim. This benchmark considers detailed robotic joint movements and interactions with environments, which prior VLN works have not explored. In our VLN-CE-Isaac experiments, our vision-based policy outperforms the blind policy by a significant margin, showing a 14% improvement in success rate. We also demonstrate that our VLA can be deployed across different robots (Unitree Go2, Unitree H1), each using distinct locomotion skills. Finally, we deploy NaVILA in the real world, exhibiting impressive robustness and achieving an 88% success rate on 25 instructions, including a 75% success rate on complex instructions across diverse scenes.

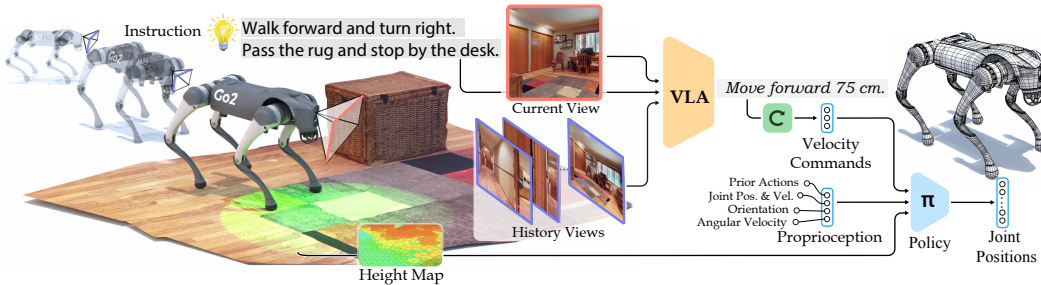


Figure 2: NaVILA is a two-level framework combining high-level visual language understanding with low-level locomotion control. Our VLA model processes single-view images to produce mid-level actions in natural language, which are then converted into precise joint movements by an advanced low-level locomotion policy. This integration allows for strong generalization and adaptability across different real-world environments, and can operate the robot in real-time.

2 METHOD

Our VLA model (NaVILA) integrates high-level visual language understanding and action with low-level locomotion control (Figure 2). NaVILA employs a VLM that processes single-view images to generate waypoint instructions in natural language. These instructions are then interpreted by a low-level locomotion policy, which translates them into precise joint movements for real-time robot control. The synergy between the VLM’s high-level reasoning and the locomotion policy’s execution capabilities enables our method to demonstrate remarkable generalization and adaptability across diverse real-world environments. In the following sections, we detail the components of our approach. We begin by describing how we tame VLMs for high-level VLN in Sec. 2.1, followed by an overview of our robot configuration and low-level locomotion policy in Sec. 2.2.

2.1 TAMING VLMs FOR HIGH-LEVEL VISION LANGUAGE NAVIGATION

VLN requires processing video inputs as observations. A common approach to handling video inputs in VLMs is through video encoders. However, recent progress in VLMs has largely been driven by the availability of image-text data. While there have been efforts to extend this success to video encoders, the lack of large, high-quality video-text datasets has limited their pre-training. To address this challenge, we opt for image-based vision-language models in our approach. These models exhibit stronger generalization abilities and possess broader knowledge, making them more suitable for tackling the generalization challenges in VLN. Specifically, we built our approach upon VILA (Lin et al., 2024b; Wu et al., 2024; Fang et al., 2024; Xue et al., 2024; Ye et al., 2024; Huang et al., 2024a), a family of efficient VLMs for both understanding and generation. VILA’s pre-training has proven particularly effective for multi-image reasoning, making it especially suitable for VLN tasks where understanding sequential image relationships is critical.

VILA Preliminary. VILA consists of three main components: a vision encoder, a projector, and an LLM. The vision encoder processes the input images, converting them into a sequence of visual tokens. These tokens are then downsampled and mapped into the language domain via an MLP projector. Afterward, the projected tokens, along with text tokens, are sent to the LLM for autoregressive generation. When handling videos, VILA uniformly sampled frames at regular intervals. It puts all the frame information before any text. A typical prompt for describing a video might look like “{frame3}{frame6}{frame9}...Tell me about this video.” Notably, with sequence parallel training (Xue et al., 2024), VILA can include frames up to 1024. VILA undergoes a 3-stage training process: first, it pre-trains a connector between the frozen LLM and vision backbones using alignment data (Liu et al., 2023); then it pre-trains both the connector and the LLM using text-image interleaved corpus (Byeon et al., 2022; Zhu et al., 2024); and finally, it fine-tunes all modules (vision encoder, connector, LLM) with instruction tuning data (Liu et al., 2023; 2024).

Navigation Prompts. In vision-language navigation tasks, images from different time steps serve two distinct purposes. The image at time step t represents the current observation, which is crucial for a VLN agent to make immediate decisions (e.g., turning right at an intersection or stopping when

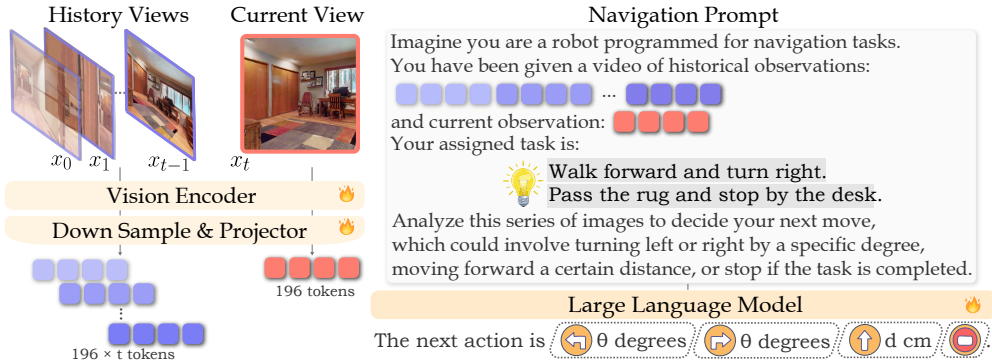


Figure 3: Overview of our VLA framework. We denote the purple blocks (■) as memory tokens sampled from historical frames, and the red blocks (■) as the current observation tokens. 🔥 denotes trainable parameters. In our experiments, we tested configurations with 8 to 64 frames for t .

the goal is reached). On the other hand, frames before time step t are historical frames that function as a memory bank, helping the agent track overall progress (e.g., remembering the starting location, reasoning about places already visited and planning the next step). Uniformly sampling frames at regular intervals, as done in VILA, is not ideal because it doesn’t differentiate between these two types of representations. Therefore, we first extract the most recent frame t as the current observation and then uniformly sample frames from the preceding $t - 1$ frames, ensuring the first frame is always included. Additionally, since current and historical observations serve different roles, we distinguish them in our task prompt using textual cues like `video of historical observations:` for memory frames and `current observation:` for the latest frame. Unlike (Zhang et al., 2024), we avoid introducing additional special tokens that could complicate the LLM’s learning process. Instead, we adhere to our design principle of keeping both the input and output of LLM in the language domain to fully leverage the reasoning capabilities of the pre-trained LLM. By integrating these tokens for historical and current observations with the navigation instruction, we construct a navigation task prompt, as shown in Figure 2.

Supervised Fine-tuning Data Blend. Effective Supervised Fine-tuning (SFT) data is crucial for developing a robust vision-language action model. Such a model should be specialized for an embodied task yet avoid overfitting to specific actions. It should also generalize well to real-world scenarios while retaining broad-world knowledge. Thanks to NaVILA’s modular framework design, which offers exceptional scalability and adaptability, it is straightforward to integrate new data sources into our pipeline. This flexibility allows us to consider diverse data sources to improve generalizability for navigation. We designed our SFT data blend from four perspectives: (1) Navigational data from real videos, (2) Navigational data from simulations, (3) Auxiliary navigational data, and (4) General VQA datasets.

First, we incorporate navigational data from real human touring videos. Recent studies (Guhur et al., 2021; Majumdar et al., 2020; Lin et al., 2023) have shown that collecting trajectory-instruction pairs from internet-data helps with navigation in discrete settings. However, extending this approach to continuous settings has remained challenging due to the difficulty of obtaining continuous action labels. Recent advances in metric-pose estimation in the wild have now made this feasible. Our data pipeline, shown in Figure 4, starts with 2K egocentric touring videos from YouTube. These videos provide a rich source of real data to learn robot navigation from human behavior. We process them into 20K trajectories using entropy-based sampling (Lin et al., 2023) to ensure variety and representativeness. Then, we estimate camera poses using Mast3R (Leroy et al., 2024) to extract step-by-step actions and generate natural language instructions for each trajectory using VLM (Lin et al., 2024b) captioning and LLM (OpenAI, 2024) rephrasing.

Second, we focus on navigational data in simulations. Currently, there are limited options for VLN datasets in continuous environments, with only R2R-CE (Krantz et al., 2020b) and RxR-CE (Ku et al., 2020) available. These datasets provide sparse path points converted from discrete VLN versions. We utilize both datasets within the Habitat simulator, employing a shortest path follower to generate action sequences that adhere to the geodesic shortest path. This results in step-wise naviga-

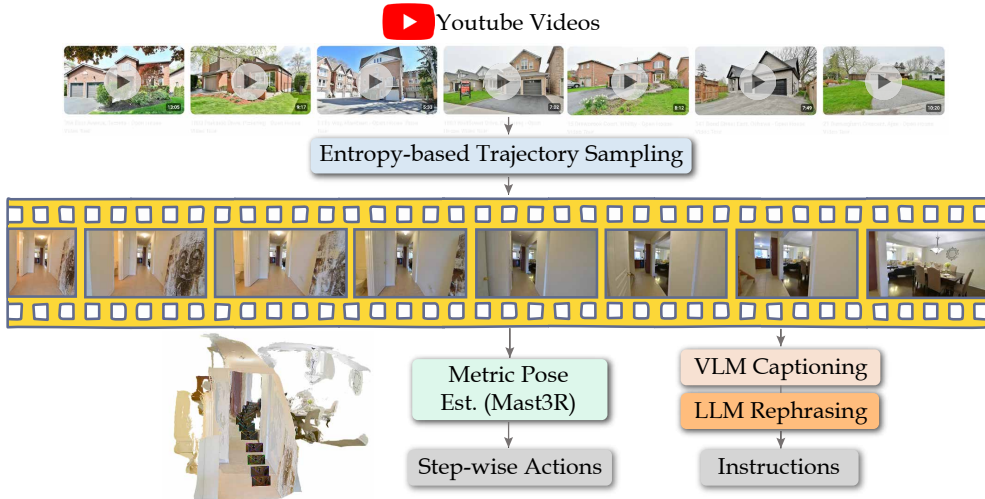


Figure 4: Data pipeline for transforming human touring videos in the wild into pairwise navigation data within a continuous environment. We begin by processing the videos into meaningful trajectories through entropy-based sampling (Lin et al., 2023). Then we extract step-wise actions through metric camera pose estimation (Leroy et al., 2024), and utilize VLM (Lin et al., 2024b) and LLM (OpenAI, 2024) to generate instructions.

tion videos, where each sample in our dataset comprises a $t + 1$ frames video and the corresponding oracle action at time step t . To encourage the LLM to generate continuous value labels for distances and angles, we merge consecutive actions (e.g., combining two forward 25 cm steps into a single forward 50 cm step), with a maximum of three consecutive actions. This merging process has two key advantages: it reduces the dataset size for more efficient processing, and it helps prevent overfitting by introducing greater diversity in the actions. Additionally, to address label imbalance, particularly the underrepresentation of the stop action, we apply a rebalancing technique for a more even distribution. For all navigation-specific data, we apply the previously described frame extraction strategy and navigation task prompt.

Third, to improve scene understanding and address the limited instructions in current R2R-CE and RxR-CE, we incorporate auxiliary navigational datasets. Following (Zhang et al., 2024), we use augmented instructions from EnvDrop (Tan et al., 2019) and introduce an auxiliary task of navigation trajectory summarization. Specifically, given a trajectory video, we sample frames by retaining the first frame and uniformly sampling the remaining ones as historical frames, and use the annotated instructions as labels. The LLM is then tasked with describing the robot’s navigation trajectory based on these frames. To further encourage spatial scene understanding, we integrate the ScanQA (Azuma et al., 2022) dataset, which features real-world 3D scan QA pairs involving human-edited questions and free-form answers grounded to 3D objects within each scene. For training, we utilize the multi-view RGB images from the raw scans to support this task.

Finally, to maintain the model’s general capabilities, we include general video/image VQA datasets from (Liu et al., 2024; Chen et al., 2024e; Maaz et al., 2024). This comprehensive dataset design enables NaVILA to generalize effectively to novel scenes and real-world environments.

Training and Inference Paradigm. Our training process begins with the stage two model of VILA, which has already undergone visual language corpus pre-training. We then apply our SFT data blend to train the entire VLM for one epoch, following standard practices. During this training, all three components—vision encoder, connector, and LLM—are unfrozen. For the inference phase, we implement a regular expression parser (Kearns, 1991), to extract action types (such as forward or turn left) and their corresponding arguments (like specific distance or angles) from the LLM output. This method has demonstrated effectiveness in both simulated environments and real-world experiments, where we empirically found that all actions throughout all experiments are successfully matched and mapped.

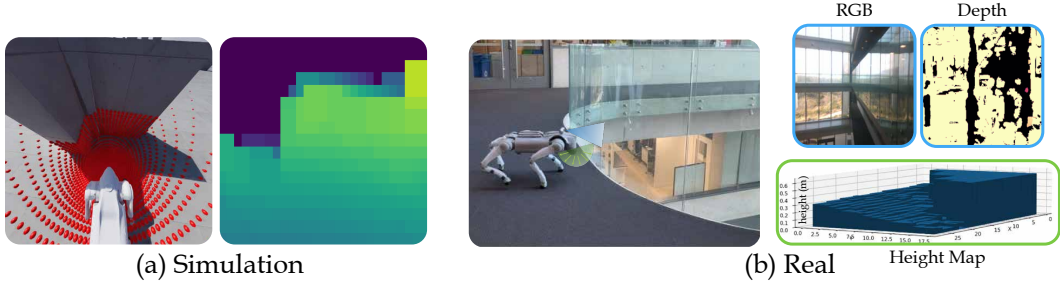


Figure 5: Height map construction from the point cloud. **(a)** Go2 robot tracks linear and angular velocity commands while avoiding collision with obstacles in simulation. The red dots represent the LiDAR point cloud, raycasting from the sensor’s center towards the terrain mesh. The left image is a preprocessed height map from the LiDAR data, with values clipped according to real-world sensor constraints. Darker colors represent lower values. **(b)** Safe robot locomotion near a transparent glass surface. The top-down height map clearly detects the glass, while the forward-facing depth and RGB images struggle to capture it.

2.2 VISUAL LOCOMOTION POLICY

In this section, we begin with a brief overview of the Go2 robot dog, the experimental platform used in this work. Next, we describe the development of the end-to-end vision-based control policy, which interprets high-level language navigation commands from the VLM and converts them into precise joint movements. This control policy is trained in the Isaac Sim simulator using Isaac Lab (Mittal et al., 2023) and then directly deployed to the real-world robot.

Go2 Robot. As shown in Figure 5, the robot is equipped with a LiDAR sensor mounted at the base of its head, broadcasting point clouds at a frequency of 15Hz. The robot features 18 degrees of freedom (DoFs), comprising 6 DoFs for its base and 3 DoFs for each of its four legs. In the policy training process, we left the 6 DoFs on the base unconstrained so that the policy only controls the 12 joint motors on the legs.

Interpreting High-level Commands As in our formulation, VLM outputs a fixed set of actionable words, such as {move forward, turn left, turn right, stop}, we casts these instructions to fixed command velocities $\{0.5 \text{ m s}^{-1}, \frac{\pi}{6} \text{ rad s}^{-1}, -\frac{\pi}{6} \text{ rad s}^{-1}, 0\}$ and execute with corresponding time durations to align with the specific VLM value.

Low-level Action and Observation Space. The action space \mathbf{a} of the control policy is defined as the desired joint position $q^d \in \mathbb{R}^{12}$, which are converted into torque input for the simulator using the stiffness and dampness. We adopt PPO algorithm (Schulman et al., 2017) to train the policy. During training, the critic observes the privileged environment and generates a value function to update the actor, while the actor only receives sensor data available in the real world. The observation space of the critic \mathbf{o}^c contains the proprioception and velocity command at the current time step t and a privileged terrain height scan around the robot. The proprioceptive data includes robot linear and angular velocity, orientation, joint positions, joint velocities, and the previous action. In the actor’s observation space \mathbf{o}^a , linear velocity is excluded, as it is unavailable in the real world, and instead, a history of proprioceptive data is used to infer this information implicitly. The robot perceives the surrounding terrain using a heightmap from the LiDAR sensor.

Incorporating Height Map from LiDAR Point Cloud. Given LiDAR’s superior ability to detect transparent objects and robust performance under strong sunlight, we chose the manufacturer-provided LiDAR as the primary sensor for perceiving the robot’s surroundings and ensuring safe navigation. The Unitree L1 generates point clouds with a wide field of view of $360^\circ \times 90^\circ$, from which we create a 2.5D height map based on the parameters listed in Table 12. For each voxel grid, the lowest value within the range is selected, and a maximum filter is then applied over the last 5 lidar point clouds to smooth the resulting height map.

Training. Different from most existing works (Lee et al., 2020; Miki et al., 2022; Margolis et al., 2022; Lee et al., 2024) that utilize the two-stage teacher-student training paradigm, we adopt a

Table 1: Comparison with state-of-the-art methods on the Val-Unseen split of R2R-CE (Krantz et al., 2020b) and RxR-CE (Ku et al., 2020). * indicates methods using the waypoint predictor from Hong et al. (2022). NaVILA outperforms all methods that do not rely on simulator pre-trained waypoint predictors, even when those methods leverage additional inputs such as depth, panoramic views, and odometry.

	Observation				R2R Val-Unseen				RxR Val-Unseen			
	S.RGB	Pano.	Depth	Odo.	NE ↓	OS ↑	SR ↑	SPL ↑	NE ↓	SR ↑	SPL ↑	nDTW ↑
HPN+DN* (Krantz et al., 2021)	✓	✓	✓		6.31	40.0	36.0	34.0	-	-	-	-
CMA* (Hong et al., 2022)	✓	✓	✓		6.20	52.0	41.0	36.0	8.76	26.5	22.1	47.0
VLN ^o BERT* (Hong et al., 2022)	✓	✓	✓		5.74	53.0	44.0	39.0	8.98	27.0	22.6	46.7
Sim2Sim* (Krantz & Lee, 2022)	✓	✓	✓		6.07	52.0	43.0	36.0	-	-	-	-
GridMM* (Wang et al., 2023c)	✓	✓	✓		5.11	61.0	49.0	41.0	-	-	-	-
Ego ² -Map* (Hong et al., 2023a)	✓	✓	✓		5.54	56.0	47.0	41.0	-	-	-	-
DreamWalker* (Wang et al., 2023a)	✓	✓	✓		5.53	59.0	49.0	44.0	-	-	-	-
Reborn* (An et al., 2022)	✓	✓	✓		5.40	57.0	50.0	46.0	5.98	48.6	42.0	63.3
ETPNav* (An et al., 2024)	✓	✓	✓		4.71	65.0	57.0	49.0	5.64	54.7	44.8	61.9
HNR* (Wang et al., 2024)	✓	✓	✓		4.42	67.0	61.0	51.0	5.50	56.3	46.7	63.5
BEVBert* (An et al., 2023)	✓	✓	✓		4.57	67.0	59.0	50.0	4.00	68.5	-	69.6
HAMT+ScaleVLN* (Wang et al., 2023d)	✓	✓	✓		4.80	-	55.0	51.0	-	-	-	-
AG-CMTP (Chen et al., 2021a)	✓	✓	✓		7.90	39.0	23.0	19.0	-	-	-	-
R2R-CMTP (Chen et al., 2021a)	✓	✓	✓		7.90	38.0	26.0	22.0	-	-	-	-
LAW (Raychaudhuri et al., 2021)	✓		✓	✓	6.83	44.0	35.0	31.0	10.90	8.0	8.0	38.0
CM2 (Georgakis et al., 2022)	✓		✓	✓	7.02	41.0	34.0	27.0	-	-	-	-
WS-MGMap (Chen et al., 2022)	✓		✓	✓	6.28	47.0	38.0	34.0	-	-	-	-
AO-Planner (Chen et al., 2024c)		✓	✓		5.55	59.0	47.0	33.0	7.06	43.3	30.5	50.1
Seq2Seq (Krantz et al., 2020a)	✓		✓		7.77	37.0	25.0	22.0	12.10	13.9	11.9	30.8
CMA (Krantz et al., 2020a)	✓		✓		7.37	40.0	32.0	30.0	-	-	-	-
RGB-Seq2Seq (Krantz et al., 2020a)	✓				10.10	8.0	0.0	0.0	-	-	-	-
RGB-CMA (Krantz et al., 2020a)	✓				9.55	10.0	5.0	4.0	-	-	-	-
NaVid (Zhang et al., 2024)	✓				5.47	49.0	37.0	35.0	-	-	-	-
NaVILA	✓				5.22	62.5	54.0	49.0	6.77	49.3	44.0	58.8

Table 2: Cross-dataset performance on the RxR-CE (Ku et al., 2020) Val-Unseen split. All results are obtained without training on the RxR-CE training set. NaVILA significantly outperforms NaVid (Zhang et al., 2024), the current single-view state-of-the-art.

	Observation			RxR Val-Unseen			
	S.RGB	Depth	Odo.	NE ↓	OS ↑	SR ↑	SPL ↑
LAW (Raychaudhuri et al., 2021)	✓	✓	✓	10.87	21.0	8.0	8.0
CM2 (Georgakis et al., 2022)	✓	✓	✓	8.98	25.3	14.4	9.2
WS-MGMap (Chen et al., 2022)	✓	✓	✓	9.83	29.8	15.0	12.1
Seq2Seq (Krantz et al., 2020a)	✓	✓		11.8	5.02	3.51	3.43
CMA (Krantz et al., 2020a)	✓	✓		11.7	10.7	4.41	2.47
RGB-Seq2Seq (Zhang et al., 2024)	✓			11.2	12.2	0.0	0.0
RGB-CMA (Zhang et al., 2024)	✓			9.55	14.8	0.0	0.0
A ² NAV (Chen et al., 2023)	✓			-	-	16.8	6.3
NaVid (Zhang et al., 2024)	✓			8.41	34.5	23.8	21.2
NaVILA	✓			8.78	46.8	34.3	28.2

single-stage manner to train the locomotion policy. Compared to two-stage training, single-stage RL is more time-efficient as it eliminates the need for policy distillation. Additionally, the policy interacts directly with the environment, allowing it to explore and potentially discover novel strategies. With the support of ray-casting in Isaac Lab, our vision-based RL policy training achieves a high throughput over 60K FPS on an RTX 4090 GPU. Training details are included in Appx. H.

3 EXPERIMENTS

We conduct experiments to answer the following questions: (1) How does our VLA’s performance compare to state-of-the-art methods in VLN-CE benchmarks and general spatial scene understanding tasks? (Section. 3.1) (2) How to evaluate locomotion navigation in simulators, and how effective and flexible is NaVILA in these scenarios? (Section. 3.2) (3) Can NaVILA pipeline be successfully deployed in real robot VLN experiments? (Section. 3.3)

Table 3: Evaluation of spatial scene understanding performance on the ScanQA dataset (Azuma et al., 2022) Validation split. NaVILA outperforms current state-of-the-art VLA models and demonstrates superior performance to other 3D LLMs that require additional input, such as depth or camera pose. Note that * indicates 3D LLMs that require task-specific fine-tuning on the ScanQA dataset.

	ScanQA Validation				
	Bleu-4 \uparrow	Rouge \uparrow	Cider \uparrow	Meteor \uparrow	EM \uparrow
<i>Task-specific Specialist</i>					
VoteNet+MCAN (Yu et al., 2019)	6.2	29.8	54.7	11.4	17.3
ScanRefer+MCAN (Yu et al., 2019)	7.9	30.0	55.4	11.5	18.6
ScanQA (Azuma et al., 2022)	10.1	33.3	64.9	13.1	21.0
3D-VisTA (Zhu et al., 2023)	10.4	35.7	69.6	13.9	22.4
<i>3D Large Multi-modal Models</i>					
3D-LLM _(flamingo) * (Hong et al., 2023b)	7.2	32.3	59.2	12.2	20.4
3D-LLM _(BLIP2-flant5) * (Hong et al., 2023b)	12.0	35.7	69.4	14.5	20.5
LL3DA* (Chen et al., 2024f)	13.5	37.3	76.8	15.9	-
Chat-3Dv2* (Huang et al., 2024b)	14.0	-	87.6	-	-
Scene-LLM* (Fu et al., 2024)	12.0	40.0	80.0	16.6	27.2
LEO (Huang et al., 2024c)	13.2	49.2	101.4	20.0	24.5
<i>2D Vision-Language-Action Models</i>					
NaviLLM (Zheng et al., 2024)	12.0	38.4	75.9	15.4	23.0
NaVILA (8 frames)	14.8	46.4	95.1	18.7	27.0
NaVILA (64 frames)	16.9	49.3	102.7	20.1	28.6

3.1 VLM PERFORMANCE

VLN-CE Benchmarks. We evaluate our VLM on the VLN-CE benchmarks, which provide continuous environments for executing navigational actions in reconstructed photorealistic indoor scenes. We focus on the val-unseen split in both R2R (Room-to-Room) and RxR (Room-across-Room) datasets within VLN-CE, as these are the two most recognized benchmarks in VLN. We employ the following widely used evaluation metrics for VLN tasks: Navigation Error (NE), Oracle Success Rate (OS), Success Rate (SR), Success-weighted Path Length (SPL), and normalize dynamic time wrapping (ndTW). We show results in Table 1, where NaVILA significantly surpasses all baselines under identical conditions (i.e., single-view RGB) in both benchmarks using a single model. Notably, this also marks the first time a VLN agent, trained solely on single-view RGB input, achieves comparable or superior results to models that use panoramic views, odometry, or simulator-pretrained waypoint predictors. This suggests that NaVILA’s strong generalization capabilities can effectively compensate for the limited observations in RGB views or odometry.

To evaluate the cross-dataset performance, we follow (Zhang et al., 2024) by training NaVILA exclusively on R2R samples, while leaving out the RxR training set. We then evaluate its zero-shot performance on the RxR Val-Unseen split. As shown in Table 2, our method significantly outperforms NaVid, the current state-of-the-art model, with a substantial 10% improvement in SR.

Spatial Scene Understanding Benchmarks. As a general navigation agent, robust spatial scene understanding (e.g., object localization, referring, and spatial reasoning) is crucial. To evaluate NaVILA’s capabilities in scene understanding, we conduct evaluations on the ScanQA Validation benchmark, a widely used dataset for 3D Question Answering. ScanQA is based on real-world scans, and we use multi-view images from these scans as input to query NaVILA for answers. As shown in Table 3, NaVILA significantly outperforms the previous state-of-the-art model, NaviLLM (Zheng et al., 2024), by a substantial margin (20 points higher on the CIDEr score). Moreover, when using 64 frames, NaVILA’s performance demonstrates superior performance compared to state-of-the-art 3D-based large multi-modal models (Huang et al., 2024c; Fu et al., 2024). This is particularly noteworthy as these other models require either 3D scans or RGBD data with camera poses as inputs, while our method achieves better results with less observation.

3.2 LEGGED ROBOT NAVIGATION PERFORMANCE IN SIMULATION

High-fidelity VLN-CE-Isaac Benchmark. Currently, there are no VLN-CE benchmarks tailored specifically for legged robots. Existing benchmarks (Krantz et al., 2020b; Ku et al., 2020) for vision-



Figure 6: VLN-CE-Isaac Benchmark

Table 4: VLN-CE-Isaac evaluation.

	Low-level Observation			VLN-CE-Isaac			
	Proprio.	LiDAR	Height Scan	NE ↓	OS ↑	SR ↑	SPL ↑
Oracle				5.25	59.8	51.3	46.9
NaVILA-Go2-Blind	✓			6.03	49.0	36.2	33.3
NaVILA-Go2-Vision	✓	✓		5.49	58.7	50.2	45.5
NaVILA-H1-Blind	✓			7.67	33.3	24.4	21.0
NaVILA-H1-Vision	✓		✓	5.86	54.6	45.3	40.3

Table 5: Real-world experiments conducted in three environments (Workspace, Home, and Outdoor). Simple and Complex refer to simple and complex instruction-following tasks, respectively.

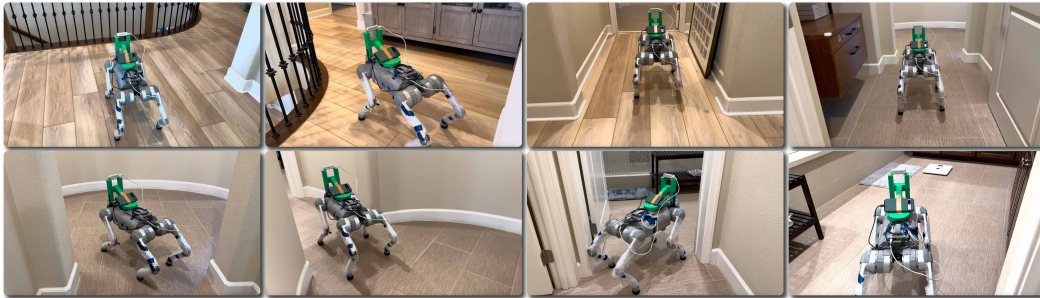
	Workspace				Home				Outdoor			
	Simple		Complex		Simple		Complex		Simple		Complex	
	NE ↓	SR ↑	NE ↓	SR ↑	NE ↓	SR ↑	NE ↓	SR ↑	NE ↓	SR ↑	NE ↓	SR ↑
GPT-4o (OpenAI, 2024)	2.01	0.67	2.38	0.33	1.49	0.53	3.00	0.00	-	0.67	-	0.50
NaVILA (w/o Human Videos)	2.00	0.60	1.81	0.73	2.17	0.47	2.32	0.40	-	0.00	-	0.00
NaVILA	1.29	1.00	1.76	0.80	1.15	1.00	1.76	0.67	-	1.00	-	0.83

language navigation are based on the Habitat (Savva et al., 2019) simulator, which focuses on high-level planning without addressing precise low-level robotic control. For instance, agents in Habitat can navigate through narrow gaps, such as a 10 cm space between two sofas, which is impractical for legged robots like quadrupeds or humanoids. To overcome this limitation, we introduce a new benchmark VLN-CE-Isaac built on Isaac Sim. Isaac Sim’s high-fidelity simulation captures detailed robotic joint movements and interactions with the environment, enabling comprehensive evaluations of the entire navigation pipeline, from high-level planning to precise robotic execution. We incorporate the same scenes from R2R, with robots deployed in the environment, as shown in Figure 6. From the 1,839 trajectories in the R2R Val-Unseen split, we select 1,077 traversable trajectories with high-quality meshes to ensure realistic navigation scenarios. For consistency, we evaluate performance using the same metrics as prior work.

Notably, VLN-CE-Isaac is compatible with a variety of robotic platforms. To demonstrate this flexibility, we test our NaVILA model on a Unitree Go2 robot and also a Unitree H1 robot within the benchmark. To highlight the effectiveness of the vision-based policy, we compare it against a proprioception-only (*blind*) policy. As shown in Table 4, the vision-based policy outperforms the blind policy by 14% in Success Rate in Go2 settings and 21% in H1 settings, owing to its superior obstacle avoidance capability. We also compare NaVILAs with a baseline using Oracle’s low-level policy (assuming perfect command execution without realistic physics). Results show a 15% lower success rate on the Go2 setup and a 27% lower success rate on the H1 setup when Oracle policy is not presented. These performance gaps highlight the increased challenges and realism introduced by our benchmark. Additionally, we also observe that the success rate of NaVILA on the H1 robot is significantly lower than on the Go2, which is expected due to the larger size of the humanoid robot.

3.3 REAL WORLD EVALUATION

We then conduct experiments in the real world, using 25 instructions, each repeated three times, covering both simple and complex tasks across three types of environments: Workspace, Home, and Outdoor open environments. Simple instructions consist of one or two navigation commands, where the robot does not need to navigate between rooms (e.g., “Go to the chair and stop”). In contrast, complex instructions involve three or more commands, requiring the robot to traverse multiple rooms or landmarks (e.g., “Walk out of the room, turn right, enter the room in front of you, and stop at the table”). We use standard metrics (SR and NE) and compare NaVILA against GPT-4o, a state-of-the-art VLM known for its strong generalizability. As shown in Table 5, NaVILA significantly outperforms GPT-4o in both SR and NE. We also ablate the effectiveness of adding human videos, and the results show that with the help of human videos, the model can generalize better to outdoor scenes and achieve higher success rates across all environments. Our qualitative results are



Turn right and walk around the stairs until reaching the hallway. Turn a little left, move towards the portrait poster and you'll see an open door. Go straight forward to enter the room until the end of the circular space. Turn left and enter the bathroom. Proceed to the bath mat and step onto it. Turn right and walk forward to reach the weighing machine.



Go along the slope and step into the parking lot. Stop in front of the orange cone.



Move along the way and stop in front of the stone bench and table.

Figure 7: Qualitative results from the real-world deployment of NaVILA. On top, we show the robot successfully tackling long-horizon navigation tasks by following human instructions. Below, we demonstrate the robot navigating through obstacles and climbing down stairs. Additional results are presented in Figure 8.

presented in Figure 1, Figure 7, and Figure 8. Note that we also conduct experiments using the G1 humanoid robot and achieved these results using the same VLA model without any retraining for the humanoid robot. The qualitative results are showcased in Figure 1 and Figure 8. These results highlight the effectiveness of NaVILA in bridging the gap between vision-language understanding and real-world navigation tasks.

4 RELATED WORK

Visual Navigation. Visual navigation has been a long-standing research topic in robotics for decades (Moravec, 1980; Elfes, 1987; Thrun et al., 2001; Gervet et al., 2023). Classical approaches often rely on pre-computed maps (Thrun et al., 1999) or build geometric maps of the environment using depth sensors (Newcombe et al., 2011) or monocular RGB cameras while localizing the robot simultaneously (SLAM) (Davison et al., 2007; Jones & Soatto, 2011). In recent years, learning-based approaches with Imitation Learning (Chaplot et al., 2018; Codevilla et al., 2018) and Reinforcement Learning (Mnih et al., 2015; Lillicrap, 2015) have not only shown impressive results but also enabled wider applications including vision-and-language navigation.

Vision-Language Navigation. Vision-Language Navigation (VLN) is a fundamental challenge in embodied AI, where agents navigate complex environments using visual cues and natural language instructions. The field has evolved significantly over time. Early research (Anderson et al., 2018; Ku et al., 2020; Qi et al., 2020) focused on discrete navigation in simulated environments like MP3D (Chang et al., 2017), where agents teleport between predefined nodes on a navigation graph (Fried et al., 2018; Ma et al., 2019; Tan et al., 2019; Ke et al., 2019; Hong et al., 2020; Chen et al., 2021b; 2024d; Zhou et al., 2024). As foundation models advanced, many VLN systems improved dramatically by leveraging large-scale pre-trained models (Li et al., 2019; Majumdar et al., 2020) and pre-training techniques (Guhur et al., 2021; Wang et al., 2023d; Kamath et al., 2023), approaching human-level performance in this setting. However, this setup emphasized high-

level decision-making while neglecting the challenges of underlying motion control. Recently, research (Raychaudhuri et al., 2021; Chen et al., 2022; Georgakis et al., 2022; Chen et al., 2024c; Zhang et al., 2024) has shifted towards continuous environments (VLN-CE (Krantz et al., 2020a)) using simulators like Habitat (Savva et al., 2019). This introduces greater complexity, as agents must perform mid-level actions such as moving forward or rotating, rather than teleporting between nodes. To bridge the gap between discrete and continuous navigation, some approaches (Irshad et al., 2021; Krantz & Lee, 2022; An et al., 2023; 2024) use simulator pre-trained waypoint models (Hong et al., 2022; Krantz et al., 2021) that predict candidate positions around the agent and have shown significant performance gains. However, they often struggle to generalize due to their reliance on simulator-specific data. Additionally, the candidate positions predicted by these models only cover nearby locations and do not account for low-level motion planning or obstacle avoidance. In this paper, we aim to advance VLN towards real-world robotics applications, particularly for challenging legged robots. We propose a model that handles both high-level decision-making and generates low-level actions to control the robot’s full motion. Additionally, we introduce a new VLN benchmark built on Isaac Sim, offering a more realistic simulation environment, which we believe will benefit future work in VLN.

Robot Foundation Models. Robot foundation models aim to provide a unified framework that processes inputs from various modalities, such as vision and language, and directly outputs actions to enable robots to perform complex tasks. Existing works (Brohan et al., 2023; Team et al., 2024; Kim et al., 2024) trained on large-scale robotic dataset to get general robot policies, but mainly focusing on manipulation tasks. Doshi et al. (2024) and Yang et al. (2024) proposed end-to-end visual-language cross-embodiment models for different robotic tasks. Recently, several foundational navigation model have been proposed (Zeng et al., 2024; Shah et al., 2023; Sridhar et al., 2024). However, they mainly focus on goal navigation with either short language descriptions or a target image as input. As for legged robots, Ding et al. (2024) proposed a unified model to leverage vision and language inputs and generate executable low-level actions. Another line of work (Chen et al., 2024a; Ouyang et al., 2024) focuses on training specialized policies as a skill bank to handle specific actions, with either a VLM or LLM serving as the controller to decide which skill to execute. Similarly, these methods cannot perform instruction-following tasks, as they struggle to comprehend complex instructions that are essential for general navigation. To address this, we propose a VLA model specifically designed for general vision language navigation tasks. Our model generates high-level action commands, which are then executed by a low-level policy. This approach enables the robot to interpret complex instructions and navigate effectively towards the goals.

Legged Robot Locomotion Learning. Legged robot learning for locomotion navigation focuses on enabling robots to traverse various terrains. Previous works (Wang et al., 2023b; Long et al., 2024) rely solely on robot’s proprioceptive information struggle in scenarios like obstacle avoidance. Other end-to-end vision-based approaches (Kareer et al., 2023; Yang et al., 2022; Imai et al., 2022; Yang et al., 2023) are vulnerable to extreme environmental conditions, such as intense sunlight, due to the limitations of sensors. Lee et al. (2020) and Miki et al. (2022) incorporate LiDAR sensors in addition to depth cameras to improve terrain sensing, but rely on time-inefficient two-state training. To overcome these limitations, we propose a single-stage RL framework that integrates LiDAR sensing inputs during training, allowing the robot to directly learn from interacting with the environments for more efficient learning and robust performance in complex scenarios.

5 CONCLUSION

We introduce NaVILA, a powerful two-level framework that unifies vision-language-action models (VLAs) with locomotion skills for generic navigation tasks. NaVILA generates high-level, language-based commands, while a real-time locomotion policy handles obstacle avoidance. This dual-frequency design improves robustness and flexibility across different robots. By preserving reasoning capabilities through language-based actions, NaVILA avoids overfitting and can be trained on broader tasks. In experiments, NaVILA shows a 17% improvement on classic VLN benchmarks, outperforms vision-blind policies in our new VLN-CE-Isaac 1K benchmark, and demonstrates strong real-world performance across diverse scenes.

REFERENCES

- Dong An, Zun Wang, Yangguang Li, Yi Wang, Yicong Hong, Yan Huang, Liang Wang, and Jing Shao. 1st place solutions for rxr-habitat vision-and-language navigation competition. In *CVPRW*, 2022. 7
- Dong An, Yuankai Qi, Yangguang Li, Yan Huang, Liang Wang, Tieniu Tan, and Jing Shao. Bevbort: Multimodal map pre-training for language-guided navigation. In *ICCV*, 2023. 7, 11
- Dong An, Hanqing Wang, Wenguan Wang, Zun Wang, Yan Huang, Keji He, and Liang Wang. Etpnav: Evolving topological planning for vision-language navigation in continuous environments. *IEEE TPAMI*, 2024. 7, 11
- Peter Anderson, Qi Wu, Damien Teney, Jake Bruce, Mark Johnson, Niko Sünderhauf, Ian Reid, Stephen Gould, and Anton Van Den Hengel. Vision-and-language navigation: Interpreting visually-grounded navigation instructions in real environments. In *CVPR*, 2018. 2, 10
- Daichi Azuma, Taiki Miyanishi, Shuhei Kurita, and Motoaki Kawanabe. Scanqa: 3d question answering for spatial scene understanding. In *CVPR*, 2022. 5, 8, 21
- Anthony Brohan, Noah Brown, Justice Carbajal, Yevgen Chebotar, Xi Chen, Krzysztof Choromanski, Tianli Ding, Danny Driess, Avinava Dubey, Chelsea Finn, et al. Rt-2: Vision-language-action models transfer web knowledge to robotic control. *arXiv preprint*, 2023. 2, 11
- Minwoo Byeon, Beomhee Park, Haecheon Kim, Sungjun Lee, Woonhyuk Baek, and Saehoon Kim. Coyo-700m: Image-text pair dataset. <https://github.com/kakaobrain/coyo-dataset>, 2022. 3
- Angel Chang, Angela Dai, Thomas Funkhouser, Maciej Halber, Matthias Niessner, Manolis Savva, Shuran Song, Andy Zeng, and Yinda Zhang. Matterport3d: Learning from rgb-d data in indoor environments. In *3DV*, 2017. 10
- Devendra Singh Chaplot, Kanthashree Mysore Sathyendra, Rama Kumar Pasumarthi, Dheeraj Rajagopal, and Ruslan Salakhutdinov. Gated-attention architectures for task-oriented language grounding. In *AAAI*, 2018. 10
- Devendra Singh Chaplot, Dhiraj Gandhi, Saurabh Gupta, Abhinav Gupta, and Ruslan Salakhutdinov. Learning to explore using active neural slam. In *ICLR*, 2020a. 2
- Devendra Singh Chaplot, Dhiraj Prakashchand Gandhi, Abhinav Gupta, and Russ R Salakhutdinov. Object goal navigation using goal-oriented semantic exploration. In *NeurIPS*, 2020b. 2
- Devendra Singh Chaplot, Ruslan Salakhutdinov, Abhinav Gupta, and Saurabh Gupta. Neural topological slam for visual navigation. In *CVPR*, 2020c. 2
- Annie S Chen, Alec M Lessing, Andy Tang, Govind Chada, Laura Smith, Sergey Levine, and Chelsea Finn. Commonsense reasoning for legged robot adaptation with vision-language models. *arXiv preprint*, 2024a. 11
- Boyuan Chen, Zhuo Xu, Sean Kirmani, Brain Ichter, Dorsa Sadigh, Leonidas Guibas, and Fei Xia. Spatialvlm: Endowing vision-language models with spatial reasoning capabilities. In *CVPR*, 2024b. 2
- Jiaqi Chen, Bingqian Lin, Xinmin Liu, Xiaodan Liang, and Kwan-Yee K Wong. Affordances-oriented planning using foundation models for continuous vision-language navigation. *arXiv preprint*, 2024c. 7, 11
- Jiaqi Chen, Bingqian Lin, Ran Xu, Zhenhua Chai, Xiaodan Liang, and Kwan-Yee Wong. Mapgpt: Map-guided prompting with adaptive path planning for vision-and-language navigation. In *ACL*, 2024d. 10
- Kevin Chen, Junshen K Chen, Jo Chuang, Marynel Vázquez, and Silvio Savarese. Topological planning with transformers for vision-and-language navigation. In *CVPR*, 2021a. 7

- Lin Chen, Jisong Li, Xiaoyi Dong, Pan Zhang, Conghui He, Jiaqi Wang, Feng Zhao, and Dahua Lin. Sharegpt4v: Improving large multi-modal models with better captions. In *ECCV*, 2024e. 5
- Peihao Chen, Dongyu Ji, Kunyang Lin, Runhao Zeng, Thomas Li, Mingkui Tan, and Chuang Gan. Weakly-supervised multi-granularity map learning for vision-and-language navigation. In *NeurIPS*, 2022. 7, 11
- Peihao Chen, Xinyu Sun, Hongyan Zhi, Runhao Zeng, Thomas H. Li, Gaowen Liu, Mingkui Tan, and Chuang Gan. A²nav: Action-aware zero-shot robot navigation by exploiting vision-and-language ability of foundation models. *arXiv preprint*, 2023. 7
- Shizhe Chen, Pierre-Louis Guhur, Cordelia Schmid, and Ivan Laptev. History aware multimodal transformer for vision-and-language navigation. In *NeurIPS*, 2021b. 10
- Sijin Chen, Xin Chen, Chi Zhang, Mingsheng Li, Gang Yu, Hao Fei, Hongyuan Zhu, Jiayuan Fan, and Tao Chen. Ll3da: Visual interactive instruction tuning for omni-3d understanding reasoning and planning. In *CVPR*, 2024f. 8
- An-Chieh Cheng, Hongxu Yin, Yang Fu, Qiushan Guo, Ruihan Yang, Jan Kautz, Xiaolong Wang, and Sifei Liu. Spatialrgpt: Grounded spatial reasoning in vision-language models. In *NeurIPS*, 2024. 2
- Felipe Codevilla, Matthias Müller, Antonio López, Vladlen Koltun, and Alexey Dosovitskiy. End-to-end driving via conditional imitation learning. In *ICRA*, 2018. 10
- Andrew J Davison, Ian D Reid, Nicholas D Molton, and Olivier Stasse. Monoslam: Real-time single camera slam. *IEEE TPAMI*, 2007. 10
- Pengxiang Ding, Han Zhao, Zhitao Wang, Zhenyu Wei, Shangke Lyu, and Donglin Wang. Quar-vla: Vision-language-action model for quadruped robots. In *ECCV*, 2024. 11
- Ria Doshi, Homer Rich Walke, Oier Mees, Sudeep Dasari, and Sergey Levine. Scaling cross-embodied learning: One policy for manipulation, navigation, locomotion and aviation. In *CoRL*, 2024. 11
- Alberto Elfes. Sonar-based real-world mapping and navigation. *IEEE Journal on Robotics and Automation*, 1987. 10
- Yunhao Fang, Ligeng Zhu, Yao Lu, Yan Wang, Pavlo Molchanov, Jan Kautz, Jang Hyun Cho, Marco Pavone, Song Han, and Hongxu Yin. Vila²: Vila augmented vila. *arXiv preprint*, 2024. 3
- Daniel Fried, Ronghang Hu, Volkan Cirik, Anna Rohrbach, Jacob Andreas, Louis-Philippe Morency, Taylor Berg-Kirkpatrick, Kate Saenko, Dan Klein, and Trevor Darrell. Speaker-follower models for vision-and-language navigation. In *NeurIPS*, 2018. 10
- Rao Fu, Jingyu Liu, Xilun Chen, Yixin Nie, and Wenhan Xiong. Scene-llm: Extending language model for 3d visual understanding and reasoning. *arXiv preprint*, 2024. 8, 20, 21
- Georgios Georgakis, Karl Schmeckpeper, Karan Wanchoo, Soham Dan, Eleni Miltsakaki, Dan Roth, and Kostas Daniilidis. Cross-modal map learning for vision and language navigation. In *CVPR*, 2022. 7, 11
- Theophile Gervet, Soumith Chintala, Dhruv Batra, Jitendra Malik, and Devendra Singh Chaplot. Navigating to objects in the real world. *Science Robotics*, 2023. 10
- Pierre-Louis Guhur, Makarand Tapaswi, Shizhe Chen, Ivan Laptev, and Cordelia Schmid. Airbert: In-domain pretraining for vision-and-language navigation. In *ICCV*, 2021. 4, 10
- Yicong Hong, Cristian Rodriguez, Yuankai Qi, Qi Wu, and Stephen Gould. Language and visual entity relationship graph for agent navigation. In *NeurIPS*, 2020. 10
- Yicong Hong, Zun Wang, Qi Wu, and Stephen Gould. Bridging the gap between learning in discrete and continuous environments for vision-and-language navigation. In *CVPR*, 2022. 7, 11

- Yicong Hong, Yang Zhou, Ruiyi Zhang, Franck Deroncourt, Trung Bui, Stephen Gould, and Hao Tan. Learning navigational visual representations with semantic map supervision. In *ICCV*, 2023a. 7
- Yining Hong, Haoyu Zhen, Peihao Chen, Shuhong Zheng, Yilun Du, Zhenfang Chen, and Chuang Gan. 3d-llm: Injecting the 3d world into large language models. In *NeurIPS*, 2023b. 8
- De-An Huang, Shijia Liao, Subhashree Radhakrishnan, Hongxu Yin, Pavlo Molchanov, Zhiding Yu, and Jan Kautz. Lita: Language instructed temporal-localization assistant. In *ECCV*, 2024a. 3
- Haifeng Huang, Zehan Wang, Rongjie Huang, Luping Liu, Xize Cheng, Yang Zhao, Tao Jin, and Zhou Zhao. Chat-scene: Bridging 3d scene and large language models with object identifiers. In *NeurIPS*, 2024b. 8
- Jiangyong Huang, Silong Yong, Xiaojian Ma, Xiongkun Linghu, Puhao Li, Yan Wang, Qing Li, Song-Chun Zhu, Baoxiong Jia, and Siyuan Huang. An embodied generalist agent in 3d world. In *ICML*, 2024c. 8, 20, 21
- Chieko Sarah Imai, Minghao Zhang, Yuchen Zhang, Marcin Kierebiński, Ruihan Yang, Yuzhe Qin, and Xiaolong Wang. Vision-guided quadrupedal locomotion in the wild with multi-modal delay randomization. In *IROS*, 2022. 11
- Muhammad Zubair Irshad, Chih-Yao Ma, and Zsolt Kira. Hierarchical cross-modal agent for robotics vision-and-language navigation. In *ICRA*, 2021. 11
- Eagle S Jones and Stefano Soatto. Visual-inertial navigation, mapping and localization: A scalable real-time causal approach. *The International Journal of Robotics Research*, 2011. 10
- Aishwarya Kamath, Peter Anderson, Su Wang, Jing Yu Koh, Alexander Ku, Austin Waters, Yinfei Yang, Jason Baldridge, and Zarana Parekh. A new path: Scaling vision-and-language navigation with synthetic instructions and imitation learning. In *CVPR*, 2023. 10
- Simar Kareer, Naoki Yokoyama, Dhruv Batra, Sehoon Ha, and Joanne Truong. Vinl: Visual navigation and locomotion over obstacles. In *ICRA*, 2023. 11
- Liyiming Ke, Xiujun Li, Yonatan Bisk, Ari Holtzman, Zhe Gan, Jingjing Liu, Jianfeng Gao, Yejin Choi, and Siddhartha Srinivasa. Tactical rewind: Self-correction via backtracking in vision-and-language navigation. In *CVPR*, 2019. 10
- Steven M Kearns. Extending regular expressions with context operators and parse extraction. *Software: Practice and Experience*, 1991. 5
- Moo Jin Kim, Karl Pertsch, Siddharth Karamcheti, Ted Xiao, Ashwin Balakrishna, Suraj Nair, Rafael Rafailov, Ethan Foster, Grace Lam, Pannag Sanketi, et al. Openvla: An open-source vision-language-action model. *arXiv preprint*, 2024. 2, 11
- Jacob Krantz and Stefan Lee. Sim-2-sim transfer for vision-and-language navigation in continuous environments. In *ECCV*, 2022. 7, 11
- Jacob Krantz, Erik Wijmans, Arjun Majumdar, Dhruv Batra, and Stefan Lee. Beyond the nav-graph: Vision-and-language navigation in continuous environments. In *ECCV*, 2020a. 7, 11
- Jacob Krantz, Erik Wijmans, Arjun Majumdar, Dhruv Batra, and Stefan Lee. Beyond the nav-graph: Vision and language navigation in continuous environments. In *ECCV*, 2020b. 4, 7, 8, 21
- Jacob Krantz, Aaron Gokaslan, Dhruv Batra, Stefan Lee, and Oleksandr Maksymets. Waypoint models for instruction-guided navigation in continuous environments. In *CVPR*, 2021. 7, 11
- Alexander Ku, Peter Anderson, Roma Patel, Eugene Ie, and Jason Baldridge. Room-across-room: Multilingual vision-and-language navigation with dense spatiotemporal grounding. In *EMNLP*, 2020. 4, 7, 8, 10
- Joonho Lee, Jemin Hwangbo, Lorenz Wellhausen, Vladlen Koltun, and Marco Hutter. Learning quadrupedal locomotion over challenging terrain. *Science Robotics*, 2020. 6, 11

- Joonho Lee, Marko Bjelonic, Alexander Reske, Lorenz Wellhausen, Takahiro Miki, and Marco Hutter. Learning robust autonomous navigation and locomotion for wheeled-legged robots. *Science Robotics*, 2024. 6
- Vincent Leroy, Yohann Cabon, and Jérôme Revaud. Grounding image matching in 3d with mast3r. In *ECCV*. Springer, 2024. 4, 5
- Xiujun Li, Chunyuan Li, Qiaolin Xia, Yonatan Bisk, Asli Celikyilmaz, Jianfeng Gao, Noah Smith, and Yejin Choi. Robust navigation with language pretraining and stochastic sampling. In *EMNLP*, 2019. 10
- TP Lillicrap. Continuous control with deep reinforcement learning. *arXiv preprint*, 2015. 10
- Ji Lin, Jiaming Tang, Haotian Tang, Shang Yang, Wei-Ming Chen, Wei-Chen Wang, Guangxuan Xiao, Xingyu Dang, Chuang Gan, and Song Han. Awq: Activation-aware weight quantization for llm compression and acceleration. In *MLSys*, 2024a. 23
- Ji Lin, Hongxu Yin, Wei Ping, Pavlo Molchanov, Mohammad Shoeybi, and Song Han. Vila: On pre-training for visual language models. In *CVPR*, 2024b. 3, 4, 5
- Kunyang Lin, Peihao Chen, Diwei Huang, Thomas H Li, Mingkui Tan, and Chuang Gan. Learning vision-and-language navigation from youtube videos. In *ICCV*, 2023. 4, 5
- Haotian Liu, Chunyuan Li, Qingyang Wu, and Yong Jae Lee. Visual instruction tuning. In *NeurIPS*, 2023. 3
- Haotian Liu, Chunyuan Li, Yuheng Li, and Yong Jae Lee. Improved baselines with visual instruction tuning. In *CVPR*, 2024. 3, 5
- Junfeng Long, Zirui Wang, Quanyi Li, Liu Cao, Jiawei Gao, and Jiangmiao Pang. Hybrid internal model: Learning agile legged locomotion with simulated robot response. In *ICLR*, 2024. 11
- Chih-Yao Ma, Jiasen Lu, Zuxuan Wu, Ghassan AlRegib, Zsolt Kira, Richard Socher, and Caiming Xiong. Self-monitoring navigation agent via auxiliary progress estimation. In *ICLR*, 2019. 10
- Muhammad Maaz, Hanoona Rasheed, Salman Khan, and Fahad Shahbaz Khan. Video-chatgpt: Towards detailed video understanding via large vision and language models. In *ACL*, 2024. 5
- Arjun Majumdar, Ayush Shrivastava, Stefan Lee, Peter Anderson, Devi Parikh, and Dhruv Batra. Improving vision-and-language navigation with image-text pairs from the web. In *ECCV*, 2020. 4, 10
- Gabriel B Margolis, Ge Yang, Kartik Paigwar, Tao Chen, and Pulkit Agrawal. Rapid locomotion via reinforcement learning. In *RSS*, 2022. 6
- Takahiro Miki, Joonho Lee, Jemin Hwangbo, Lorenz Wellhausen, Vladlen Koltun, and Marco Hutter. Learning robust perceptive locomotion for quadrupedal robots in the wild. *Science Robotics*, 2022. 6, 11
- Mayank Mittal, Calvin Yu, Qinxu Yu, Jingzhou Liu, Nikita Rudin, David Hoeller, Jia Lin Yuan, Ritvik Singh, Yunrong Guo, Hammad Mazhar, Ajay Mandlekar, Buck Babich, Gavriel State, Marco Hutter, and Animesh Garg. Orbit: A unified simulation framework for interactive robot learning environments. In *RAL*, 2023. 6
- Volodymyr Mnih, Koray Kavukcuoglu, David Silver, Andrei A Rusu, Joel Veness, Marc G Belle-mare, Alex Graves, Martin Riedmiller, Andreas K Fidjeland, Georg Ostrovski, et al. Human-level control through deep reinforcement learning. *Nature*, 2015. 10
- Hans Peter Moravec. *Obstacle avoidance and navigation in the real world by a seeing robot rover*. Stanford University, 1980. 10
- Richard A Newcombe, Shahram Izadi, Otmar Hilliges, David Molyneaux, David Kim, Andrew J Davison, Pushmeet Kohi, Jamie Shotton, Steve Hodges, and Andrew Fitzgibbon. Kinectfusion: Real-time dense surface mapping and tracking. In *International Symposium on Mixed and Augmented Reality*, 2011. 10

- OpenAI. Hello gpt-4o, 2024. URL <https://openai.com/index/hello-gpt-4o/>. 4, 5, 9
- Yutao Ouyang, Jinhan Li, Yunfei Li, Zhongyu Li, Chao Yu, Koushil Sreenath, and Yi Wu. Long-horizon locomotion and manipulation on a quadrupedal robot with large language models. *arXiv preprint*, 2024. 11
- Abhishek Padalkar, Acorn Pooley, Ajinkya Jain, Alex Bewley, Alex Herzog, Alex Irpan, Alexander Khazatsky, Anant Rai, Anikait Singh, Anthony Brohan, et al. Open x-embodiment: Robotic learning datasets and rt-x models. In *ICRA*, 2024. 2
- Yuankai Qi, Qi Wu, Peter Anderson, Xin Wang, William Yang Wang, Chunhua Shen, and Anton van den Hengel. Reverie: Remote embodied visual referring expression in real indoor environments. In *CVPR*, 2020. 10
- Ram Ramrakhya, Eric Undersander, Dhruv Batra, and Abhishek Das. Habitat-web: Learning embodied object-search strategies from human demonstrations at scale. In *CVPR*, 2022. 2
- Sonia Raychaudhuri, Saim Wani, Shivansh Patel, Unnat Jain, and Angel Chang. Language-aligned waypoint (law) supervision for vision-and-language navigation in continuous environments. In *EMNLP*, 2021. 7, 11
- Manolis Savva, Abhishek Kadian, Oleksandr Maksymets, Yili Zhao, Erik Wijmans, Bhavana Jain, Julian Straub, Jia Liu, Vladlen Koltun, Jitendra Malik, et al. Habitat: A platform for embodied ai research. In *ICCV*, 2019. 9, 11
- John Schulman, Filip Wolski, Prafulla Dhariwal, Alec Radford, and Oleg Klimov. Proximal policy optimization algorithms. *arXiv preprint*, 2017. 6
- Dhruv Shah, Ajay Sridhar, Arjun Bhorkar, Noriaki Hirose, and Sergey Levine. Gnm: A general navigation model to drive any robot. In *ICRA*, 2023. 11
- Ajay Sridhar, Dhruv Shah, Catherine Glossop, and Sergey Levine. Nomad: Goal masked diffusion policies for navigation and exploration. In *ICRA*, 2024. 11
- Hao Tan, Licheng Yu, and Mohit Bansal. Learning to navigate unseen environments: Back translation with environmental dropout. In *NAACL*, 2019. 5, 10
- Octo Model Team, Dibya Ghosh, Homer Walke, Karl Pertsch, Kevin Black, Oier Mees, Sudeep Dasari, Joey Hejna, Tobias Kreiman, Charles Xu, et al. Octo: An open-source generalist robot policy. In *RSS*, 2024. 11
- Sebastian Thrun, Maren Bennewitz, Wolfram Burgard, Armin B Cremers, Frank Dellaert, Dieter Fox, Dirk Hahnel, Charles Rosenberg, Nicholas Roy, Jamieson Schulte, et al. Minerva: A second-generation museum tour-guide robot. In *ICRA*, 1999. 10
- Sebastian Thrun, Dieter Fox, Wolfram Burgard, and Frank Dellaert. Robust monte carlo localization for mobile robots. *Artificial intelligence*, 2001. 10
- Hanqing Wang, Wei Liang, Luc Van Gool, and Wenguan Wang. Dreamwalker: Mental planning for continuous vision-language navigation. In *ICCV*, 2023a. 7
- Xin Wang, Qiuyuan Huang, Asli Celikyilmaz, Jianfeng Gao, Dinghan Shen, Yuan-Fang Wang, William Yang Wang, and Lei Zhang. Reinforced cross-modal matching and self-supervised imitation learning for vision-language navigation. In *CVPR*, 2019. 2
- Yikai Wang, Zheyuan Jiang, and Jianyu Chen. Learning robust, agile, natural legged locomotion skills in the wild. In *CoRL*, 2023b. 11
- Zihan Wang, Xiangyang Li, Jiahao Yang, Yeqi Liu, and Shuqiang Jiang. Gridmm: Grid memory map for vision-and-language navigation. In *ICCV*, 2023c. 7
- Zihan Wang, Xiangyang Li, Jiahao Yang, Yeqi Liu, Junjie Hu, Ming Jiang, and Shuqiang Jiang. Lookahead exploration with neural radiance representation for continuous vision-language navigation. In *CVPR*, 2024. 7

- Zun Wang, Jialu Li, Yicong Hong, Yi Wang, Qi Wu, Mohit Bansal, Stephen Gould, Hao Tan, and Yu Qiao. Scaling data generation in vision-and-language navigation. In *ICCV*, 2023d. 7, 10
- Yecheng Wu, Zhuoyang Zhang, Junyu Chen, Haotian Tang, Dacheng Li, Yunhao Fang, Ligeng Zhu, Enze Xie, Hongxu Yin, Li Yi, et al. Vila-u: a unified foundation model integrating visual understanding and generation. *arXiv preprint*, 2024. 3
- Fuzhao Xue, Yukang Chen, Dacheng Li, Qinghao Hu, Ligeng Zhu, Xiuyu Li, Yunhao Fang, Haotian Tang, Shang Yang, Zhijian Liu, et al. Longvila: Scaling long-context visual language models for long videos. *arXiv preprint*, 2024. 3
- Jonathan Yang, Catherine Glossop, Arjun Bhorkar, Dhruv Shah, Quan Vuong, Chelsea Finn, Dorsa Sadigh, and Sergey Levine. Pushing the limits of cross-embodiment learning for manipulation and navigation. *arXiv preprint*, 2024. 11
- Ruihan Yang, Minghao Zhang, Nicklas Hansen, Huazhe Xu, and Xiaolong Wang. Learning vision-guided quadrupedal locomotion end-to-end with cross-modal transformers. In *ICLR*, 2022. 11
- Ruihan Yang, Ge Yang, and Xiaolong Wang. Neural volumetric memory for visual locomotion control. In *CVPR*, 2023. 11
- Hanrong Ye, De-An Huang, Yao Lu, Zhiding Yu, Wei Ping, Andrew Tao, Jan Kautz, Song Han, Dan Xu, Pavlo Molchanov, et al. X-vila: Cross-modality alignment for large language model. *arXiv preprint*, 2024. 3
- Zhou Yu, Jun Yu, Yuhao Cui, Dacheng Tao, and Qi Tian. Deep modular co-attention networks for visual question answering. In *CVPR*, 2019. 8
- Kuo-Hao Zeng, Zichen Zhang, Kiana Ehsani, Rose Hendrix, Jordi Salvador, Alvaro Herrasti, Ross Girshick, Aniruddha Kembhavi, and Luca Weihs. Poliformer: Scaling on-policy rl with transformers results in masterful navigators. In *CoRL*, 2024. 11
- Jiazhao Zhang, Kunyu Wang, Rongtao Xu, Gengze Zhou, Yicong Hong, Xiaomeng Fang, Qi Wu, Zhizheng Zhang, and Wang He. Navid: Video-based vlm plans the next step for vision-and-language navigation. In *RSS*, 2024. 4, 5, 7, 8, 11, 21
- Duo Zheng, Shijia Huang, Lin Zhao, Yiwu Zhong, and Liwei Wang. Towards learning a generalist model for embodied navigation. In *CVPR*, 2024. 8, 21
- Gengze Zhou, Yicong Hong, Zun Wang, Xin Eric Wang, and Qi Wu. Navgpt-2: Unleashing navigational reasoning capability for large vision-language models. In *ECCV*, 2024. 10
- Wanrong Zhu, Jack Hessel, Anas Awadalla, Samir Yitzhak Gadre, Jesse Dodge, Alex Fang, Youngjae Yu, Ludwig Schmidt, William Yang Wang, and Yejin Choi. Multimodal c4: An open, billion-scale corpus of images interleaved with text. In *NeurIPS*, 2024. 3
- Ziyu Zhu, Xiaojian Ma, Yixin Chen, Zhidong Deng, Siyuan Huang, and Qing Li. 3d-vista: Pre-trained transformer for 3d vision and text alignment. In *ICCV*, 2023. 8

APPENDIX TABLE OF CONTENTS

A	More Results from Real-World Experiments	19
B	Ablation Study on Different Simulation Data Blends in VLA Training	20
C	Ablation Study on the Impact of Real Video Data in Simulations	20
D	Ablation Study on Different Memory Size	20
E	More Results on VLN-CE-Isaac	20
F	Implementation Details for Video Navigation Trajectory Summarization	21
G	VLA Hyperparameters	21
H	Implementation Details for Locomotion Motion Policy	22
I	Parameter-efficient Quantization	23
J	Limitations	23

A MORE RESULTS FROM REAL-WORLD EXPERIMENTS



Turn left a little. Go straight forward. Stop when you step on the grass.



Walk forward. Step on the grass and continue going forward.
Stop when you are close to the big bear statue.



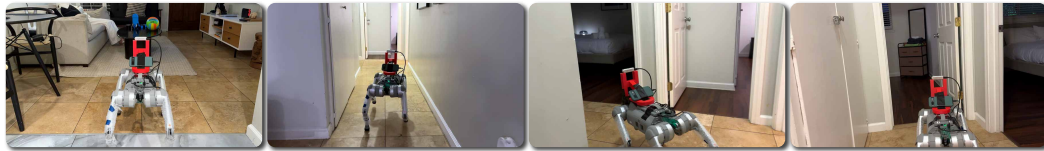
Go up the stairs and stop in front of the door.



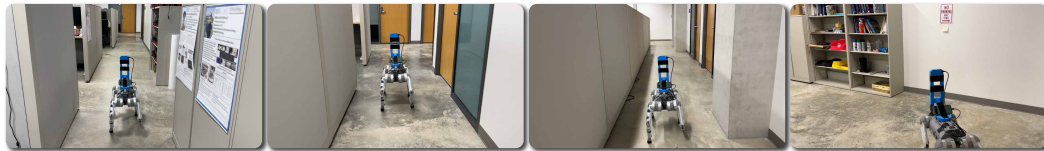
Move forward into the kitchen. Turn right at the corner, and then walk straight forward.
Stop in front of the red bowl.



Walk forward out of the room. Turn right and enter the other room and stop in front of the table.



Turn right immediately, walk along the hallway, turn left at the end and enter the most left bedroom.



Walk all the way down, turn left at the intersection and find a bookshelf.



Walk all the way down, turn left at the intersection and find a ball.

Figure 8: We show more results in diverse environments, such as urban streets, campus sidewalks, courtyards, and different houses. These settings add significant variety and challenges, including climbing stairs, dynamic objects, and different lighting conditions.

B ABLATION STUDY ON DIFFERENT SIMULATION DATA BLENDS IN VLA TRAINING

We perform an ablation study to assess the impact of different simulation data blends on training VLA. As shown in Table 6, training navigation data without label rebalancing leads to a significant drop in performance. Additionally, training VLA exclusively on RxR data demonstrates reasonable cross-dataset performance on R2R-CE, supporting our observations in Table 2. Lastly, we investigate whether excluding RxR dataset degrades R2R-CE performance. The results suggest that the RxR dataset does not significantly contribute to the R2R-CE performance.

Table 6: Results on R2R-CE using different data blends.

	R2R-CE Val Unseen			
	NE ↓	OSR ↑	SR ↑	SPL ↑
NaVILA (w/o Label Balancing)	7.82	47.5	30.0	25.1
NaVILA (w/ RxR only)	7.57	40.8	31.5	27.8
NaVILA (w/o RxR)	6.11	57.0	47.7	42.4
NaVILA <i>Baseline</i>	5.37	57.6	49.7	45.5

C ABLATION STUDY ON THE IMPACT OF REAL VIDEO DATA IN SIMULATIONS

We perform ablation studies in simulations to assess the effect of using real-world data from YouTube human touring videos. As shown in Table 7, incorporating this data leads to significant performance gains, with approximately 5% improvements in OS, SR, and SPL metrics. Similarly, results from real-world experiments (Table 5) demonstrate higher success rates and fewer navigation errors. These results validate the effectiveness of our data pipeline and highlight the scalability of NaVILA’s framework, which supports easy integration of data from diverse sources.

Table 7: Results on R2R-CE using additional data from human touring videos.

	R2R-CE Val Unseen			
	NE ↓	OSR ↑	SR ↑	SPL ↑
NaVILA (w/o Real Videos)	5.37	57.6	49.7	45.5
NaVILA	5.22	62.5	54.0	49.0

D ABLATION STUDY ON DIFFERENT MEMORY SIZE

We conduct an ablation study to evaluate the impact of memory size (number of history frames) on two tasks: the navigation task using R2R-CE and the spatial understanding task using ScanQA. The results in Table 8 show that for R2R-CE, 8 frames are sufficient to cover most instruction horizons, with limited performance gains from increasing the memory size. In contrast, ScanQA requires a finer-grained memory to recall details such as spatial information of previously seen objects. The results in Table 9 show that NaVILA’s performance consistently improves with a larger memory size. Notably, with a memory size of 64 frames, NaVILA outperforms state-of-the-art 3D-LLMs (Scene-LLM (Fu et al., 2024) and LEO (Huang et al., 2024c)) across all metrics. For real-world experiments, we use an 8-frame memory size due to latency constraints. While larger memory sizes could potentially improve performance, we leave it as future work.

E MORE RESULTS ON VLN-CE-ISAAC

Here we show a visualization example highlighting why the Go2 vision policy significantly outperforms the blind policy. As demonstrated in Figure 9, when encountering an obstacle, the VLA, which is not specifically trained for obstacle avoidance, failed to navigate around it effectively. The blind policy, following the VLA’s commands without additional sensory input, became stuck at the obstacle. In contrast, the vision-based policy, trained to handle obstacles using LiDAR input, can autonomously avoid dangers even when the high-level VLA model does not detect them.

Table 8: Ablation study on different memory size using R2R-CE (Krantz et al., 2020b) Validation Unseen split.

	R2R-CE Val Unseen			
	NE ↓	OSR ↑	SR ↑	SPL ↑
NaVid (Zhang et al., 2024)	5.47	49.0	37.0	35.0
NaVILA (8 frames)	5.37	57.6	49.7	45.5
NaVILA (16 frames)	5.63	55.8	48.6	44.4
NaVILA (32 frames)	5.74	55.9	49.5	44.1
NaVILA (64 frames)	5.63	60.5	50.1	45.4

Table 9: Ablation study on different memory size using ScanQA dataset (Azuma et al., 2022) Validation split.

	ScanQA Validation				
	Bleu-4 ↑	Rouge ↑	Cider ↑	Meteor ↑	EM ↑
<i>3D Large Multi-modal Models</i>					
Scene-LLM (Fu et al., 2024)	12.0	40.0	80.0	16.6	27.2
LEO (Huang et al., 2024c)	13.2	49.2	101.4	20.0	24.5
<i>2D Vision-Language-Action Models</i>					
NaviLLM (Zheng et al., 2024)	12.0	38.4	75.9	15.4	23.0
NaVILA (8 frames)	14.8	46.4	95.1	18.7	27.0
NaVILA (16 frames)	15.2	48.3	99.8	19.6	27.4
NaVILA (32 frames)	16.1	49.4	101.6	20.2	28.1
NaVILA (64 frames)	16.9	49.3	102.7	20.1	28.6



Figure 9: Comparison between Go2 blind policy and vision policy. The blind policy failed to avoid the obstacles and got stuck. The vision policy detected the obstacle and got around to avoiding it.

F IMPLEMENTATION DETAILS FOR VIDEO NAVIGATION TRAJECTORY SUMMARIZATION

We provide the data prompts for our auxiliary task of video navigation trajectory summarization. Following the approach in (Zhang et al., 2024), we construct prompt templates that characterize the LLM as a robot designed for navigation. We process the trajectory videos into history frames, insert the frame tokens into the prompt, and ask the LLM to infer the navigation instructions from the video. This task is designed to enhance the robot’s scene understanding and its familiarity with the instruction format.

Assume you are a robot designed for navigation. You are provided with captured image sequences: `<frame3><frame6><frame9>` Based on this image sequence, please describe the navigation trajectory of the robot.

G VLA HYPERPARAMETERS

Please refer to VILA’s paper for details on the hyperparameters used in the first two stages. In the instruction fine-tuning stage, we use a learning rate of $1e^{-4}$ with cosine decay and a warm-up ratio of 0.03. We will release both our training code and data upon paper publication.

H IMPLEMENTATION DETAILS FOR LOCOMOTION MOTION POLICY

Reward and randomization: The reward functions and domain randomization used during Go2 locomotion policy training are listed in Table 10 and Table 11. The robust policy is trained on flat, rough, slope and obstacle terrains shown in Figure 10. LiDAR and height map settings are detailed in Table 12.

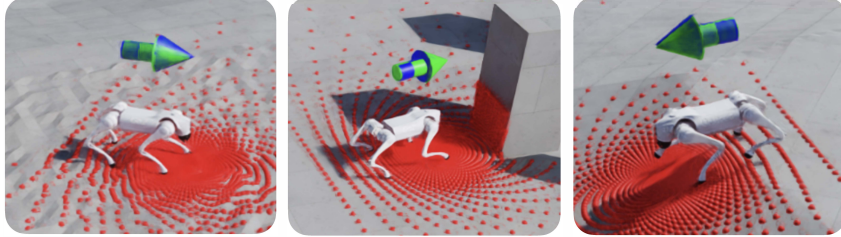


Figure 10: Random rough, obstacle and slope terrain.

Table 10: Reward function parameters for training locomotion policy.

Reward	Expression	Weight
Linear velocity tracking	$\exp(-\ v_{xy}^{\text{cmd}} - v_{xy}\ _2^2)$	1.5
Angular velocity tracking	$\exp(-(\omega_{yaw}^{\text{cmd}} - \omega_{yaw})^2)$	1.5
Linear velocity penalty (z)	v_z^2	-2.0
Angular velocity penalty (xy)	$\ \omega_{xy}\ _2^2$	-0.05
Flat orientation	$\ \mathbf{g}\ _2^2$	-2.0
Joint accelerations	$\ \ddot{\theta}\ _2^2$	-2.5×10^{-7}
Energy	$-\ \tau\dot{q}\ _2^2$	-2×10^{-5}
Body height	$(h^{\text{target}} - h)^2$	-5.0
Feet slipping	$-\ v_{\text{feet}} \cdot \mathbf{1}[F_{\text{feet}} > 1]\ _2$	0.05

Table 11: Domain randomization parameters for training locomotion policy.

Parameter	Value
Body Mass	[-3.0, 3.0]
Static Ground Friction	[0.4, 4.0]
Dynamic Ground Friction	[0.4, 4.0]
Motor Strength	[0.9, 1.1]
System Delay	$[\Delta_t, \Delta_t]$

Table 12: LiDAR and Height Map parameters in simulation.

Parameter	Value
Channels	32
Vertical Range (degrees)	(0, 90)
Horizontal Range (degrees)	(-180, 180)
Horizontal Resolution (degrees)	4
Voxel Size (m)	0.06
X Range (m)	[-0.8, 0.2]
Y Range (m)	[-0.8, 0.8]
Z Range (m)	[0.05, 0.5]



Figure 11: Obstacle avoidance screenshots. Locomotion policy can ensure collision-free in the face of high grass, certain transparent glass, and large objects under strong sunlight. The policy presents robustness on sand and grass terrains.

I PARAMETER-EFFICIENT QUANTIZATION

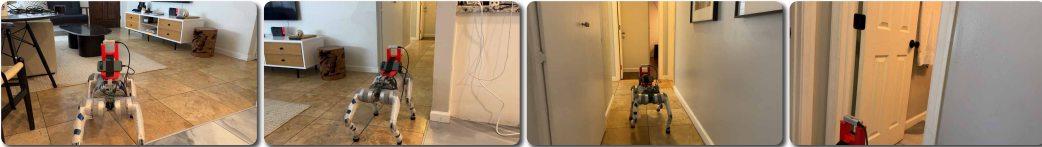
NaVILA’s current wait time between each action is about 1 second, which is practical for real-world deployment. All our demonstration videos are shown at 1x speed without any acceleration, accurately reflecting real-world performance. The wait time arises from two factors: image transmission time from Go2 to the server, and the VLA inference time. The transmission time largely depends on the network conditions, while the VLA inference time is approximately 0.6 seconds per sample. We further explore optimization techniques to improve the pipeline efficiency. Specifically, we apply AWQ (Lin et al., 2024a), a state-of-the-art quantization method for VLMs, to the FP16 NaVILA-8B model. By converting it to the W4A16 format (low-bit weight-only quantization), we achieved significant improvements: memory requirements dropped by half, and processing speed improved by about 40%. Most importantly, navigation capabilities remained robust. These optimizations make NaVILA deployable directly on the robot, which will eliminate image transmission time significantly. We leave this as future work.

Table 13: NaVILA quantization results. The computational cost is tested on RTX 4090 with 1737 context tokens and 10 generated tokens, using a sample from R2R-CE as the test case.

	Computational Cost		R2R Val-Unseen			
	Total Latency (ms) ↓	GPU Memory (GB) ↓	NE ↓	OS ↑	SR ↑	SPL ↑
NaVILA (FP16)	594.58	18.5	5.37	57.6	49.7	45.5
NaVILA (W4A16)	367.80	8.6	5.66	56.8	48.2	43.6

J LIMITATIONS

While our method shows strong performance, we highlight a failure case in the real world where the robot initially follows the prompt but ultimately fails to reach the correct target position. To further enhance performance, further improving generalizability and spatial understanding is key, and one potential direction is larger-scale training on more realistic simulations. Additionally, image-based vision-language models require a significant number of tokens, which is computationally intensive and limits the number of history frames processed. This challenge could be addressed with recent advancements in long-context LLMs, allowing for more efficient handling of longer sequences. We leave these as future works.



Walk along the hallway and enter the bedroom.

Figure 12: Failure case of NaVILA.